

DEVINE DISTRICT

IMPECCABLY CURATED FLOORPLANS:

- Airy 10' Ceilings
- Impressive Floor to Ceiling Windows*
- Private Patios & Balconies
- Fiber Optics connections
- Customized Shelving
- Wood finished Dress-In Closets
- Contemporary Media Shelves with USB Charging
- 8' Entry Doors
- Wood Inspired Flooring in Living & Kitchen
- Premier Energy Star Lighting & Ceiling Fans

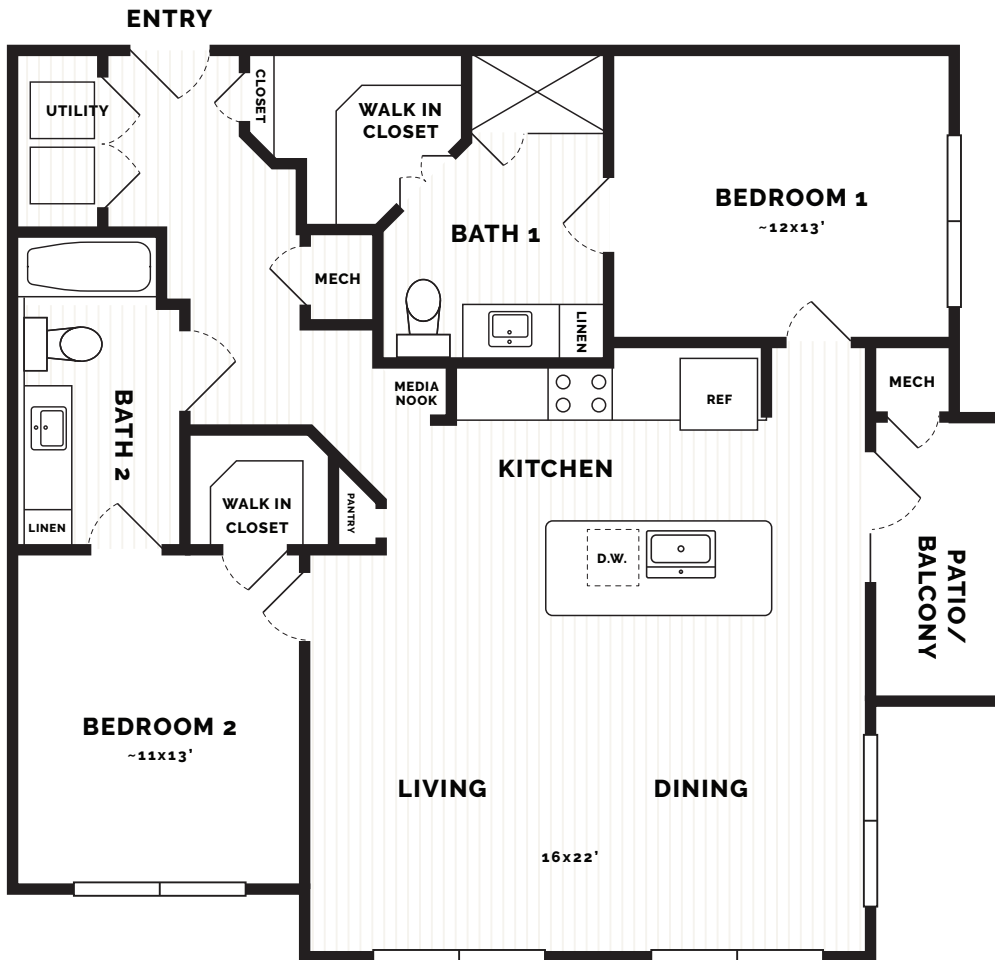
GOURMET, CHEF INSPIRED KITCHENS FEATURING:

- Gorgeous White Quartz Countertops
- Dual Hued European Style Cabinetry
- Kitchen Islands illuminated with Designer Pendant Lighting and space for Bar Top Seating
- Sleek Pull Down Kitchen Faucets
- Modern Single Basin Sink
- Dynamic Stainless Steel Energy Star Appliances
- Discreet Under Cabinet Lighting
- Superbly -designed Built-In Pantries
- Decorative Tiled Backsplash
- Distinctive Floating Shelving above Sink*

REFINED BATHROOMS INCLUDING:

- State of the Art Square Undermount Sinks
- Spa Inspired Tiled, Stand-In Frameless Showers*
- Roomy Linen Closets
- Stylish Chrome Fixtures

**select units only*



C3 2 bedroom/2 bath
~1258 sq.ft.

The Developer, its successors, or assigns reserve the right without notice to any resident or prospective purchasers, to alter or modify preliminary plans, specifications, prices, materials, finishes, standard features, upgrade features, and other descriptions of the project including amenities, restrictions, and any other matters that may affect the project and unit ownership. Photographs, renderings, and other depictions are illustrative and conceptual only. All renderings are illustrative only and are subject to change. Plans are preliminary and are not to scale. Square footage and dimensions are approximate and should not be relied upon as a representation, express or implied. Floor plans may vary per residence, elevation, type, and may be in mirror image. Unit does not include washer, dryer, furniture, or furnishings.

DEVINEDISTRICT.COM  